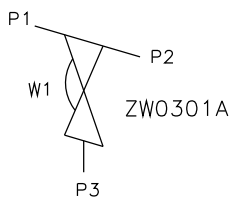


The information on this sheet is Private and Confidential and is the property of Crane Process Flow Technologies Limited and must not be published directly or indirectly in any manner whatsoever without the written permission of the Company and must not be used in any way detrimental to their interests.  
 © Crane Process Flow Technologies

<b>CRANE</b>	Process Flow Technologies A Crane Co. Company	<b>Saunders</b> The Science Inside
--------------	--------------------------------------------------	---------------------------------------

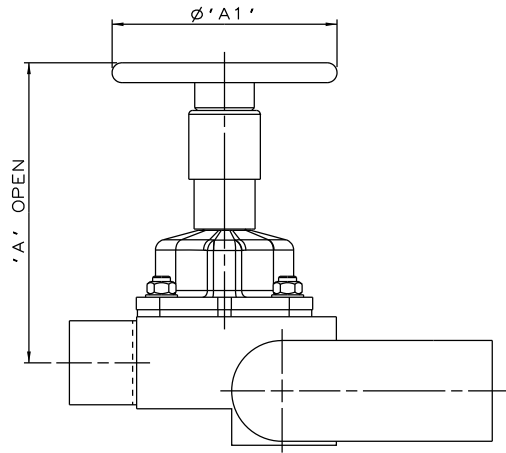
Title  
 SCHEDULE OF LEADING DIMENSIONS FOR DN65/2.50 WEIR  
 POINT OF USE 'T' BODY WITH BUTT WELD OD TUBE ENDS

Drawn R1	Date 29.09.11	UNCONTROLLED IN HARD COPY FORMAT
Checked RND	Date 21.03.12	
First Angle Projection Method E	DO NOT SCALE	Drawing No. WEB-038 Issue. 2

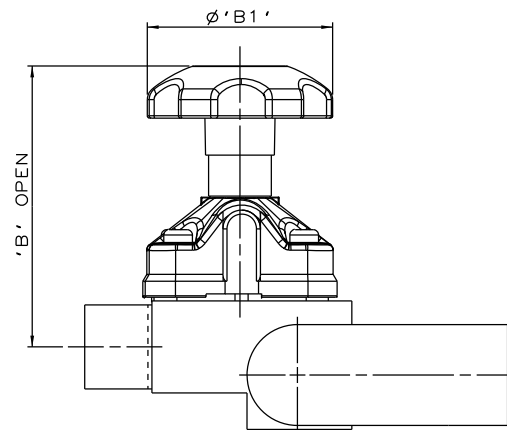


ORIENTATION AS PER P&ID DIAGRAM FOR OPTIMUM DRAINABILITY.

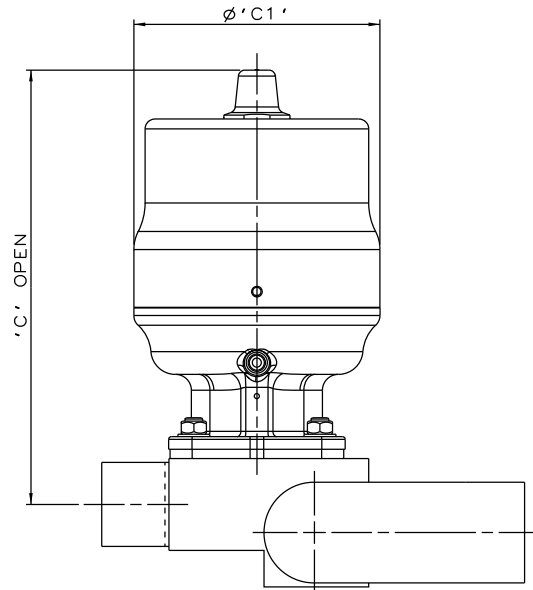
MAINLINE SIZE		A		B		C		D		øE		øF		G		H		BODY WEIGHT
mm	inch	mm	inch	mm	inch	mm	inch	mm	inch	mm	inch	mm	inch	mm	inch	mm	inch	Kgs
DN65	2.50	139.8	5.50	50.8	2.00	37.1	1.46	49.0	1.93	63.5	2.50	60.2	2.37	34.8	1.37	431.6	16.99	9.3
DN80	3.00	158.8	6.25	50.8	2.00	43.5	1.71	56.0	2.20	76.2	3.00	72.9	2.87	34.8	1.37	469.6	18.49	9.0
DN100	4.00	203.2	8.00	50.8	2.00	55.7	2.20	67.5	2.66	101.6	4.00	97.38	3.83	34.8	1.37	558.4	21.98	13.1



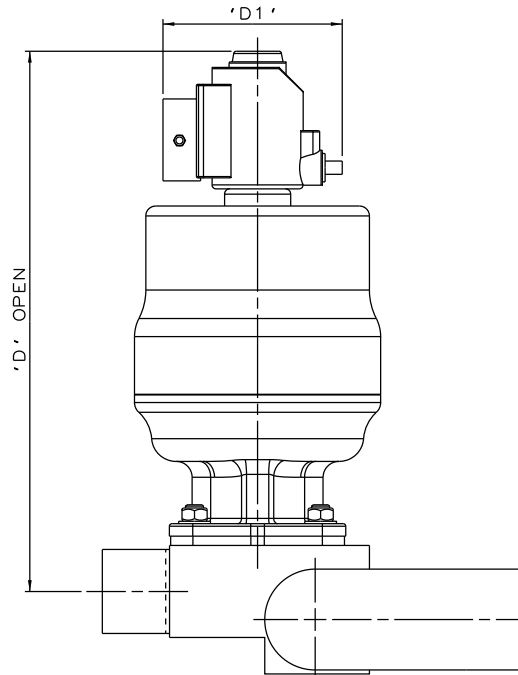
SS NON SEALED  
BONNET ASSEMBLY



PES BONNET  
ASSEMBLY



\*S360 ACTUATOR



\*S360 ACTUATOR  
WITH I-VUE SENSOR

\*DIMENSIONS SHOW MAXIMUM ENVELOPE FOR ALL MODES

MAINLINE SIZE	A		A1		B		B1		C		C1		D		D1		
	mm	inch	mm	inch	mm	inch	mm	inch	mm	inch	mm	inch	mm	inch	mm	inch	
DN65	2.50	227	8.94	170	6.7	213	8.39	140	5.51	328	12.91	186	7.32	408	16.06	135.5	5.33

The information on this sheet is Private and Confidential and is the property of Crane Process Flow Technologies Limited and must not be published directly or indirectly in any manner whatsoever without the written permission of the Company and must not be used in any way detrimental to their interests.  
© Crane Process Flow Technologies

**CRANE** Process Flow Technologies  
A Crane Co. Company

**Saunders**  
The Science Inside

Title  
SCHEDULE OF LEADING DIMENSIONS FOR DN65/2.50  
WEIR POINT OF USE 'T' BODY COMPLETE WITH  
BUTT WELD OD TUBE ENDS  
FITTED WITH TOPWORKS OPTIONS

Drawn JRD	Date 28.09.16	UNCONTROLLED IN HARD COPY FORMAT
Checked RND	Date 28.09.16	

First Angle Projection Method E		DO NOT SCALE	Drawing No. WEB-038-ASSY	Issue. 1
---------------------------------------	--	-----------------	-----------------------------	-------------